



YOUR LOCAL DEALER

QUALITY MATERIALS
Quality Workmanship



BARNs FOR LESS LLC

(517) 358-1658

Visit us:

**2424 W Michigan Ave
Jackson, MI 49202**

Lofted Cabins & Lofted Casitas

The **Lofted Cabins and Lofted Casitas** make a perfect “She Shed” or “Man Cave”. They also make a perfect place to stay when you are out on a Hunting or Fishing trip. They have an attractive porch to relax and enjoy a cup of your favorite coffee or tea. They also serve as a nice workshop in your backyard to store your yard and garden tools. Or maybe you have overnight guests and they may want their own private space. Or choose a **Lofted Cabin or Lofted Casita** for many more applications.



Shown with optional shutters

LOFTED CABIN - 14x32 Driftwood Urethane, Almond Trim, Stone Metal Roof

Standard Features

- They come standard with 6' 6" walls and lots of loft space for sleeping quarters or storage.
- All Lofted Cabins and Lofted Casitas come standard with 6' wide double doors. 20' long and shorter Lofted Cabins come with 4' porch. 22' long and longer come with 6' porch.
- 16' and shorter Lofted Casitas come with 4' by 8' porch. 18' and longer come with 4' x 12' porch.

LOFTED CASITA - 14x32 Driftwood Urethane, White Trim, with black metal roof



- All 10' wide Lofted Cabins and 12x16 and smaller Lofted Casitas come standard with one 9-Lite Fiberglass Entry Door and three 2'x3' Windows. (only one window on porch).
- All 12' wide and larger Lofted Cabins come with one 9-Lite Fiberglass Entry Door and four 2'x3' Windows. (shutters not available on porch windows of Lofted Casitas or 12' lofted cabins with standard door and window placement).

LOFTED CABIN & LOFTED CASITA PRICES

Size	Price	Rent to Own (36 mos.) (48 mos.)		Size	Price	Rent to Own (36 mos.) (48 mos.)		Size	Price	Rent to Own (36 mos.) (48 mos.)	
*10x16	\$6,510	\$301.39	\$264.63	12x36	\$12,945	\$599.31	\$526.22	14x40	\$16,965	\$785.42	\$689.63
12x16	\$7,520	\$348.15	\$305.69	12x40	\$14,295	\$661.81	\$581.10	16x32	\$16,315	\$755.32	\$663.21
12x20	\$8,945	\$414.12	\$363.62	14x24	\$11,035	\$510.88	\$448.58	16x36	\$18,295	\$846.99	\$743.70
12x24	\$10,180	\$471.30	\$413.82	14x28	\$12,410	\$574.54	\$504.47	16x40	\$19,825	\$917.82	\$805.89
12x28	\$10,895	\$504.40	\$442.89	14x32	\$13,770	\$637.50	\$559.76	Same price for painted, treated, or urethane exterior finish.			
12x32	\$11,615	\$537.73	\$472.15	14x36	\$15,365	\$711.34	\$624.59				

Cabins & Casitas

Do you have a plot of land that you wish to put a structure on? Homestead Barns can build and deliver you that dream building. The **Cabins and Casitas** make a perfect “Get-a-Way” place for you to enjoy the scenic outdoors from the comfort of the porch. Maybe you need a building to keep your lawn and garden tools. Or you may be dreaming of that nice woodworking shop in your back yard. At Homestead Barns we can customize a building to fit your need.



CABIN - 16x32 Dark Gray Paint, White Trim, with Charcoal Metal Roof

Standard Features

- The Cabins and Casitas come standard with 7' 8" tall walls and 6' wide double doors.
- 20' long and shorter Cabins come with 4' porch. 22' long and longer come with 6' porch.
- 16' and shorter Casitas come with 4' by 8' porch. 18' and longer come with 4' x 12' porch.
- All 10' wide Cabins and 12x16 and smaller Casitas come standard with one 9-Lite Fiberglass Entry Door and three 2'x3' Windows. (only one window on porch).
- All 12' wide and larger Cabins come with one 9-Lite Fiberglass Entry Door and four 2'x3' Windows. (shutters not available on porch windows of Casitas or 12' cabins with standard door and window placement).

CASITA - 14x32 Olive Green Paint, Almond Trim, with Burnished Slate Metal Roof



CABIN & CASITA PRICES

Size	Price	Rent to Own (36 mos.) (48 mos.)		Size	Price	Rent to Own (36 mos.) (48 mos.)		Size	Price	Rent to Own (36 mos.) (48 mos.)	
8x12	\$4,315	\$199.77	\$175.41	12x32	\$10,420	\$482.41	\$423.58	14x40	\$15,315	\$709.03	\$622.56
10x16	\$6,000	\$277.78	\$243.90	12x36	\$11,610	\$537.50	\$471.95	16x32	\$14,920	\$690.74	\$606.50
10x20	\$7,035	\$325.69	\$285.98	12x40	\$12,790	\$592.13	\$519.92	16x36	\$16,670	\$771.76	\$677.64
12x16	\$6,950	\$321.76	\$282.52	14x24	\$9,890	\$457.87	\$402.03	16x40	\$18,520	\$857.41	\$752.85
12x20	\$8,060	\$373.15	\$327.64	14x28	\$11,165	\$516.90	\$453.86	Same price for painted, treated, or urethane exterior finish.			
12x24	\$9,130	\$422.69	\$371.14	14x32	\$12,440	\$575.93	\$505.69				
12x28	\$9,775	\$452.55	\$397.36	14x36	\$13,880	\$642.59	\$564.23				

Lofted Garden Sheds

The **Lofted Garden Shed** has a loft built into each side of the shed, giving you the most storage room for your money! These lofts are a handy place to store small boxes, seasonal decorations, extra household items, and anything else you want to save for later use.

Down below, the **Lofted Garden Shed** has room to keep your lawn mower, tiller, 4-wheeler, garden supplies, etc.

Standard features of the **Lofted Garden Shed** are doors on the side and two 2'x3' windows. (shutters are not available on standard door and window placement for buildings shorter than 16').



12x16 Dark Gray Paint, White Trim, with Charcoal Metal Roof

10x16 Olive Green Paint, Almond Trim, with Burnished Slate Metal Roof

Shown with Optional Shutters



Lofted Garden Sheds

LOFTED GARDEN SHED PRICES

Treated, Painted, Urethane				Metal Sheds			Vinyl Sheds		
Size	Pricing	Rent to Own (36 mos.) (48 mos.)		Pricing	Rent to Own (36 mos.) (48 mos.)		Pricing	Rent to Own (36 mos.) (48 mos.)	
*8×12	\$3,970	\$183.80	\$161.38	\$4,295	\$198.84	\$174.59	\$4,535	\$209.95	\$184.35
*10×12	\$4,830	\$223.61	\$196.34	\$5,240	\$242.59	\$213.01	\$5,540	\$256.48	\$225.20
10×16	\$5,870	\$271.76	\$238.62	\$6,365	\$294.68	\$258.74	\$6,720	\$311.11	\$273.17
10×20	\$6,820	\$315.74	\$277.24	\$7,395	\$342.36	\$300.61	\$7,815	\$361.81	\$317.68
12×16	\$6,740	\$312.04	\$273.98	\$7,315	\$338.66	\$297.36	\$7,725	\$357.64	\$314.02
12×20	\$8,170	\$378.24	\$332.11	\$8,865	\$410.42	\$360.37	\$9,365	\$433.56	\$380.69
12×24	\$9,400	\$435.19	\$382.11	\$10,210	\$472.69	\$415.04	\$10,780	\$499.07	\$438.21
12×28	\$10,120	\$468.52	\$411.38	\$10,985	\$508.56	\$446.54	\$11,610	\$537.50	\$471.95
12×32	\$10,835	\$501.62	\$440.45	\$11,765	\$544.68	\$478.25	\$12,430	\$575.46	\$505.28
12×36	\$12,170	\$563.43	\$494.72	\$13,215	\$611.81	\$537.20	\$13,965	\$646.53	\$567.68
12×40	\$13,520	\$625.93	\$549.59	\$14,680	\$679.63	\$596.75	\$15,515	\$718.29	\$630.69
14×24	\$10,260	\$475.00	\$417.07	\$11,135	\$515.51	\$452.64	\$11,765	\$544.68	\$478.25
14×28	\$11,630	\$538.43	\$472.76	\$12,625	\$584.49	\$513.21	\$13,340	\$617.59	\$542.28
14×32	\$12,990	\$601.39	\$528.05	\$14,110	\$653.24	\$573.58	\$14,910	\$690.28	\$606.10
14×36	\$14,585	\$675.23	\$592.89	\$15,840	\$733.33	\$643.90	\$16,740	\$775.00	\$680.49
14×40	\$16,185	\$749.31	\$657.93	\$17,580	\$813.89	\$714.63	\$18,580	\$860.19	\$755.28
16×32	\$15,535	\$719.21	\$631.50	\$16,875	\$781.25	\$685.98	\$17,830	\$825.46	\$724.80
16×36	\$17,520	\$811.11	\$712.20	\$19,030	\$881.02	\$773.58	\$20,115	\$931.25	\$817.68
16×40	\$19,045	\$881.71	\$774.19	\$20,685	\$957.64	\$840.85	\$21,870	\$1,012.50	\$889.02

Lofted Barns

The **Lofted Barn** has the same cute profile as our Barn with the additional benefit of a loft providing up to 50% more storage space! For only a little more money, you get a lot more room.

Not only is the **Lofted Barn** ideal for storage, but it also provides a comfortable place to pursue hobbies. Do you need a shop to tinker with small engines or space for your woodworking tools?

Would you like a spot where your children can use their creativity to invent things from scraps?

We can also customize with windows or a small access door. Available in painted, treated, or urethane exterior finish. All 8' wide buildings come with a 4' door. All 10' and wider buildings have standard 6' double doors.



10x16 Treated Lofted Barn

12x16 Red Paint, White Trim, with Black Metal Roof



10x16 Driftwood Urethane, white Trim, with Black Metal Roof



LOFTED BARN PRICES

Treated, Painted, Urethane				Metal Barns			Vinyl Barns		
Size	Pricing	Rent to Own (36 mos.) (48 mos.)		Pricing	Rent to Own (36 mos.) (48 mos.)		Pricing	Rent to Own (36 mos.) (48 mos.)	
8×12	\$3,800	\$175.93	\$154.47	\$4,130	\$191.20	\$167.89	\$4,370	\$202.31	\$177.64
10×12	\$4,760	\$220.37	\$193.50	\$5,170	\$239.35	\$210.16	\$5,470	\$253.24	\$222.36
10×16	\$5,700	\$263.89	\$231.71	\$6,195	\$286.81	\$251.83	\$6,550	\$303.24	\$266.26
10×20	\$6,650	\$307.87	\$270.33	\$7,230	\$334.72	\$293.90	\$7,645	\$353.94	\$310.77
12×16	\$6,575	\$304.40	\$267.28	\$7,145	\$330.79	\$290.45	\$7,560	\$350.00	\$307.32
12×20	\$8,000	\$370.37	\$325.20	\$8,695	\$402.55	\$353.46	\$9,195	\$425.69	\$373.78
12×24	\$9,235	\$427.55	\$375.41	\$10,040	\$464.81	\$408.13	\$10,615	\$491.44	\$431.50
12×28	\$9,950	\$460.65	\$404.47	\$10,820	\$500.93	\$439.84	\$11,440	\$529.63	\$465.04
12×32	\$10,670	\$493.98	\$433.74	\$11,595	\$536.81	\$471.34	\$12,265	\$567.82	\$498.58
12×36	\$12,000	\$555.56	\$487.80	\$13,045	\$603.94	\$530.28	\$13,795	\$638.66	\$560.77
12×40	\$13,350	\$618.06	\$542.68	\$14,515	\$671.99	\$590.04	\$15,345	\$710.42	\$623.78
14×24	\$10,090	\$467.13	\$410.16	\$10,970	\$507.87	\$445.93	\$11,595	\$536.81	\$471.34
14×28	\$11,465	\$530.79	\$466.06	\$12,460	\$576.85	\$506.50	\$13,175	\$609.95	\$535.57
14×32	\$12,825	\$593.75	\$521.34	\$13,940	\$645.37	\$566.67	\$14,740	\$682.41	\$599.19
14×36	\$14,420	\$667.59	\$586.18	\$15,675	\$725.69	\$637.20	\$16,575	\$767.36	\$673.78
14×40	\$16,020	\$741.67	\$651.22	\$17,415	\$806.25	\$707.93	\$18,415	\$852.55	\$748.58
16×32	\$15,370	\$711.57	\$624.80	\$16,710	\$773.61	\$679.27	\$17,665	\$817.82	\$718.09
16×36	\$17,350	\$803.24	\$705.28	\$18,865	\$873.38	\$766.87	\$19,945	\$923.38	\$810.77
16×40	\$18,880	\$874.07	\$767.48	\$20,520	\$950.00	\$834.15	\$21,700	\$1,004.63	\$882.11

Exterior finish options included in price.

Garages

Do you need a place to park a vehicle inside, tinker with old cars, or fix up your truck? Do you have a boat or antique car that needs a home? Our **Garage** is a sturdy structure built for heavy-duty use.

Usually, we build our sheds with 2x6 floor joists 16" on center. For the **Garage**, we place the 2x6 floor joists 12" on center. The large roll-up door on the end allows for vehicle access, and a solid fiberglass entry door on the side gives you a place to slip in and out.

The **Garage** also has a 2'x3' window and air vents that are positioned to create optimum ventilation and temperature control.



14x32 Almond Paint, Taupe Trim, Burnished Slate Metal Roof

16x40 Taupe Paint, White Trim, Burnished Slate Metal Roof



GARAGE PRICES

Treated, Painted, Urethane				Metal Garages			Vinyl Garages		
Size	Pricing	Rent to Own (36 mos.) (48 mos.)		Pricing	Rent to Own (36 mos.) (48 mos.)		Pricing	Rent to Own (36 mos.) (48 mos.)	
12×16	\$6,930	\$320.83	\$281.71	\$7,450	\$344.91	\$302.85	\$7,830	\$362.50	\$318.29
12×20	\$8,035	\$371.99	\$326.63	\$8,650	\$400.46	\$351.63	\$9,095	\$421.06	\$369.72
12×24	\$9,110	\$421.76	\$370.33	\$9,820	\$454.63	\$399.19	\$10,330	\$478.24	\$419.92
12×28	\$9,750	\$451.39	\$396.34	\$10,520	\$487.04	\$427.64	\$11,070	\$512.50	\$450.00
12×32	\$10,395	\$481.25	\$422.56	\$11,220	\$519.44	\$456.10	\$11,815	\$546.99	\$480.28
12×36	\$11,585	\$536.34	\$470.93	\$12,515	\$579.40	\$508.74	\$13,180	\$610.19	\$535.77
12×40	\$12,770	\$591.20	\$519.11	\$13,795	\$638.66	\$560.77	\$14,540	\$673.15	\$591.06
14×24	\$9,870	\$456.94	\$401.22	\$10,645	\$492.82	\$432.72	\$11,210	\$518.98	\$455.69
14×28	\$11,140	\$515.74	\$452.85	\$12,030	\$556.94	\$489.02	\$12,670	\$586.57	\$515.04
14×32	\$12,420	\$575.00	\$504.88	\$13,420	\$621.30	\$545.53	\$14,135	\$654.40	\$574.59
14×36	\$13,860	\$641.67	\$563.41	\$14,980	\$693.52	\$608.94	\$15,790	\$731.02	\$641.87
14×40	\$15,290	\$707.87	\$621.54	\$16,540	\$765.74	\$672.36	\$17,435	\$807.18	\$708.74
16×32	\$14,895	\$689.58	\$605.49	\$16,115	\$746.06	\$655.08	\$16,985	\$786.34	\$690.45
16×36	\$16,645	\$770.60	\$676.63	\$18,015	\$834.03	\$732.32	\$18,995	\$879.40	\$772.15
16×40	\$18,495	\$856.25	\$751.83	\$20,025	\$927.08	\$814.02	\$21,125	\$978.01	\$858.74

Lofted Garages



Shown with Optional Shutters

12x32 Red Mahogany Urethane, Black Trim, Black Metal Roof

Our **Lofted Garage** comes with a loft that gives up to 50% more storage space!

Standard features are the 6'6" walls. It also has a 2'x3' window for lighting and ventilation. A solid fiberglass door creates an entrance on the side.

The **Lofted Garage** is a versatile building. It is ideal for storing garden tools, the small tractor, snow plow, lawn mower, 4-wheeler, woodworking equipment, etc.

The heavy-duty floor and 9'x7' roll-up door make the Lofted Garage a perfect shop for fixing up vehicles or machinery. Or the **Lofted Garage** can be a home for the antique car that you want to protect from the weather.

12x20 Dark Gray Paint, White Trim, with Charcoal Metal Roof



Lofted Garages

LOFTED GARAGE PRICES

Treated, Painted, Urethane				Metal Garages			Vinyl Garages		
Size	Pricing	Rent to Own (36 mos.) (48 mos.)		Pricing	Rent to Own (36 mos.) (48 mos.)		Pricing	Rent to Own (36 mos.) (48 mos.)	
12×16	\$7,495	\$346.99	\$304.67	\$8,070	\$373.61	\$328.05	\$8,480	\$392.59	\$344.72
12×20	\$8,925	\$413.19	\$362.80	\$9,620	\$445.37	\$391.06	\$10,120	\$468.52	\$411.38
12×24	\$10,160	\$470.37	\$413.01	\$10,965	\$507.64	\$445.73	\$11,535	\$534.03	\$468.90
12×28	\$10,875	\$503.47	\$442.07	\$11,740	\$543.52	\$477.24	\$12,365	\$572.45	\$502.64
12×32	\$11,590	\$536.57	\$471.14	\$12,520	\$579.63	\$508.94	\$13,185	\$610.42	\$535.98
12×36	\$12,925	\$598.38	\$525.41	\$13,970	\$646.76	\$567.89	\$14,720	\$681.48	\$598.37
12×40	\$14,275	\$660.88	\$580.28	\$15,435	\$714.58	\$627.44	\$16,270	\$753.24	\$661.38
14×24	\$11,015	\$509.95	\$447.76	\$11,890	\$550.46	\$483.33	\$12,520	\$579.63	\$508.94
14×28	\$12,385	\$573.38	\$503.46	\$13,380	\$619.44	\$543.90	\$14,095	\$652.55	\$572.97
14×32	\$13,745	\$636.34	\$558.74	\$14,865	\$688.19	\$604.27	\$15,665	\$725.23	\$636.79
14×36	\$15,340	\$710.19	\$623.58	\$16,595	\$768.29	\$674.59	\$17,495	\$809.95	\$711.18
14×40	\$16,940	\$784.26	\$688.62	\$18,335	\$848.84	\$745.33	\$19,335	\$895.14	\$785.98
16×32	\$16,290	\$754.17	\$662.20	\$17,630	\$816.20	\$716.67	\$18,585	\$860.42	\$755.49
16×36	\$18,275	\$846.06	\$742.89	\$19,785	\$915.97	\$804.27	\$20,870	\$966.20	\$848.37
16×40	\$19,800	\$916.67	\$804.88	\$21,440	\$992.59	\$871.54	\$22,625	\$1,047.45	\$919.72

Exterior finish options included in price.

Garden Sheds

Our **Garden Shed**, practical and economical, is a best seller. The shed has a small footprint for limited space. The large double doors make a handy entrance for large items, and a window provides natural light and ventilation. The walls of the 8' wide buildings are 6'6" high, while the 10' and wider sheds have walls that are 7' 8" tall. We offer the choice of treated, urethane, or painted finishes. You can select the look and colors that fit the style of decor that you enjoy!

The 16' long and longer have double doors in the center and 1 window on each side. (Shutters not available for standard door and window placement shorter than 16').



8x12 Driftwood Urethane, White Trim, Charcoal Metal Roof

12x20 Olive Green Paint, Almond Trim, Burnished Slate Roof



Shown with Optional Shutters and Transom Windows

Garden Sheds

GARDEN SHED PRICES

Treated, Painted, Urethane				Metal Sheds			Vinyl Sheds		
Size	Pricing	Rent to Own (36 mos.) (48 mos.)		Pricing	Rent to Own (36 mos.) (48 mos.)		Pricing	Rent to Own (36 mos.) (48 mos.)	
8×8	\$2,825	\$130.79	\$114.84	\$3,065	\$141.90	\$124.59	\$3,235	\$149.77	\$131.50
8×12	\$3,510	\$162.50	\$142.68	\$3,810	\$176.39	\$154.88	\$4,020	\$186.11	\$163.41
10×12	\$4,360	\$201.85	\$177.24	\$4,730	\$218.98	\$192.28	\$4,995	\$231.25	\$203.05
10×16	\$5,140	\$237.96	\$208.94	\$5,580	\$258.33	\$226.83	\$5,895	\$272.92	\$239.63
10×20	\$6,175	\$285.88	\$251.02	\$6,700	\$310.19	\$272.36	\$7,085	\$328.01	\$288.01
12×16	\$6,090	\$281.94	\$247.56	\$6,615	\$306.25	\$268.90	\$6,990	\$323.61	\$284.15
12×20	\$7,195	\$333.10	\$292.48	\$7,815	\$361.81	\$317.68	\$8,260	\$382.41	\$335.77
12×24	\$8,270	\$382.87	\$336.18	\$8,980	\$415.74	\$365.04	\$9,490	\$439.35	\$385.77
12×28	\$8,915	\$412.73	\$362.40	\$9,680	\$448.15	\$393.50	\$10,230	\$473.61	\$415.85
12×32	\$9,560	\$442.59	\$388.62	\$10,380	\$480.56	\$421.95	\$10,975	\$508.10	\$446.14
12×36	\$10,745	\$497.45	\$436.79	\$11,675	\$540.51	\$474.59	\$12,340	\$571.30	\$501.63
12×40	\$11,930	\$552.31	\$484.96	\$12,960	\$600.00	\$526.83	\$13,700	\$634.26	\$556.91
14×24	\$9,030	\$418.06	\$367.07	\$9,810	\$454.17	\$398.78	\$10,370	\$480.09	\$421.54
14×28	\$10,300	\$476.85	\$418.70	\$11,190	\$518.06	\$454.88	\$11,830	\$547.69	\$480.89
14×32	\$11,580	\$536.11	\$470.73	\$12,580	\$582.41	\$511.38	\$13,295	\$615.51	\$540.45
14×36	\$13,020	\$602.78	\$529.27	\$14,140	\$654.63	\$574.80	\$14,950	\$692.13	\$607.72
14×40	\$14,450	\$668.98	\$587.40	\$15,700	\$726.85	\$638.21	\$16,595	\$768.29	\$674.59
16×32	\$14,060	\$650.93	\$571.54	\$15,275	\$707.18	\$620.93	\$16,145	\$747.45	\$656.30
16×36	\$15,810	\$731.94	\$642.68	\$17,175	\$795.14	\$698.17	\$18,160	\$840.74	\$738.21
16×40	\$17,660	\$817.59	\$717.89	\$19,185	\$888.19	\$779.88	\$20,285	\$939.12	\$824.59

Klassic Garden Sheds

The **Klassic Garden Shed** will add an attractive look to your yard, while serving as a workshop for that woodworking project you have, or a place to organize your yard and garden equipment. It can also be called a “She Shed” for that yard decorating project you enjoy doing. The doors and windows can be rearranged to fit your personal need.



14x20 Almond Paint, Clay Trim, Burnished Slate Metal Roof

Standard Features

Double Doors with 10”x24” transom windows, two 2’x3’ windows with Shutters (shutters not available on buildings shorter than 14’ with standard door and window placement), One 9-Lite Fiberglass entry door, a 30” Workbench and 7’ 8” Walls.

Klassic Garden Sheds

KLASSIC GARDEN SHED PRICES

Treated, Painted, Urethane				Metal Sheds			Vinyl Sheds		
Size	Pricing	Rent to Own (36 mos.) (48 mos.)		Pricing	Rent to Own (36 mos.) (48 mos.)		Pricing	Rent to Own (36 mos.) (48 mos.)	
10×12	\$4,960	\$229.63	\$201.63	\$5,330	\$246.76	\$216.67	\$5,595	\$259.03	\$227.44
10×16	\$5,740	\$265.74	\$233.33	\$6,180	\$286.11	\$251.22	\$6,495	\$300.69	\$264.02
10×20	\$6,775	\$313.66	\$275.41	\$7,300	\$337.96	\$296.75	\$7,685	\$355.79	\$312.40
12×16	\$6,710	\$310.65	\$272.76	\$7,230	\$334.72	\$293.90	\$7,610	\$352.31	\$309.35
12×20	\$7,815	\$361.81	\$317.68	\$8,430	\$390.28	\$342.68	\$8,875	\$410.88	\$360.77
12×24	\$8,885	\$411.34	\$361.18	\$9,595	\$444.21	\$390.04	\$10,110	\$468.06	\$410.98
12×28	\$9,530	\$441.20	\$387.40	\$10,295	\$476.62	\$418.50	\$10,845	\$502.08	\$440.85
12×32	\$10,175	\$471.06	\$413.62	\$10,995	\$509.03	\$446.95	\$11,590	\$536.57	\$471.14
12×36	\$11,365	\$526.16	\$461.99	\$12,290	\$568.98	\$499.59	\$12,960	\$600.00	\$526.83
12×40	\$12,545	\$580.79	\$509.96	\$13,575	\$628.47	\$551.83	\$14,320	\$662.96	\$582.11
14×16	\$7,290	\$337.50	\$296.34	\$7,865	\$364.12	\$319.72	\$8,275	\$383.10	\$336.38
14×20	\$8,495	\$393.29	\$345.33	\$9,175	\$424.77	\$372.97	\$9,660	\$447.22	\$392.68
14×24	\$9,665	\$447.45	\$392.89	\$10,440	\$483.33	\$424.39	\$11,000	\$509.26	\$447.15
14×28	\$10,935	\$506.25	\$444.51	\$11,825	\$547.45	\$480.69	\$12,465	\$577.08	\$506.71
14×32	\$12,215	\$565.51	\$496.54	\$13,215	\$611.81	\$537.20	\$13,930	\$644.91	\$566.26
14×36	\$13,650	\$631.94	\$554.88	\$14,775	\$684.03	\$600.61	\$15,585	\$721.53	\$633.54
14×40	\$15,085	\$698.38	\$613.21	\$16,335	\$756.25	\$664.02	\$17,230	\$797.69	\$700.41
16×20	\$9,625	\$445.60	\$391.26	\$10,395	\$481.25	\$422.56	\$10,950	\$506.94	\$445.12
16×24	\$10,960	\$507.41	\$445.53	\$11,845	\$548.38	\$481.50	\$12,485	\$578.01	\$507.52
16×28	\$12,410	\$574.54	\$504.47	\$13,425	\$621.53	\$545.73	\$14,150	\$655.09	\$575.20
16×32	\$14,710	\$681.02	\$597.97	\$15,925	\$737.27	\$647.36	\$16,795	\$777.55	\$682.72
16×36	\$16,460	\$762.04	\$669.11	\$17,825	\$825.23	\$724.59	\$16,925	\$783.56	\$688.01
16×40	\$18,310	\$847.69	\$744.31	\$19,835	\$918.29	\$806.30	\$18,840	\$872.22	\$765.85

Utility Sheds

The **Utility Shed** gives you a secure, handy place to store your valuables. Our economy model, it may be the perfect starter shed for you!

Whether you need the **Utility Shed** for odd and ends storage, your lawn mower, hunting equipment, canoes, or snow blower, we guarantee a shed built from quality materials with the best of craftsmanship.

The standard **Utility Shed** has doors on the front. We construct our doors with heavy-duty 2x4-reinforcement to keep out the rain. You can lock the doors with a key.

The walls are 6'3" high on the 8' wide models. On the models that are 10' wide and wider, the walls are 7'8" high. You can select whether you want treated wood, painted, or urethane for the outside of your shed. Choose from our selection of colors to create a shed that fits your environment and tastes.

All 8' wide buildings come with a 4' door. All 10' and wider buildings have standard 6' double doors.



10x16 Dark Gray Paint, White Trim, with Charcoal Metal Roof

8x10 Chestnut Brown Urethane, Almond Trim, Stone Metal Roof



Utility Sheds

UTILITY SHED PRICES

Treated, Painted, Urethane				Metal Sheds			Vinyl Sheds		
Size	Pricing	Rent to Own (36 mos.) (48 mos.)		Pricing	Rent to Own (36 mos.) (48 mos.)		Pricing	Rent to Own (36 mos.) (48 mos.)	
8×8	\$2,740	\$126.85	\$111.38	\$2,980	\$137.96	\$121.14	\$3,150	\$145.83	\$128.05
8×12	\$3,425	\$158.56	\$139.23	\$3,725	\$172.45	\$151.42	\$3,935	\$182.18	\$159.96
10×12	\$4,275	\$197.92	\$173.78	\$4,645	\$215.05	\$188.82	\$4,915	\$227.55	\$199.80
10×16	\$5,060	\$234.26	\$205.69	\$5,495	\$254.40	\$223.37	\$5,815	\$269.21	\$236.38
10×20	\$6,090	\$281.94	\$247.56	\$6,620	\$306.48	\$269.11	\$7,000	\$324.07	\$284.55
12×16	\$6,010	\$278.24	\$244.31	\$6,530	\$302.31	\$265.45	\$6,910	\$319.91	\$280.89
12×20	\$7,115	\$329.40	\$289.23	\$7,730	\$357.87	\$314.23	\$8,175	\$378.47	\$332.32
12×24	\$8,185	\$378.94	\$332.72	\$8,895	\$411.81	\$361.59	\$9,410	\$435.65	\$382.52
12×28	\$8,830	\$408.80	\$358.94	\$9,595	\$444.21	\$390.04	\$10,145	\$469.68	\$412.40
12×32	\$9,475	\$438.66	\$385.16	\$10,295	\$476.62	\$418.50	\$10,890	\$504.17	\$442.68
12×36	\$10,665	\$493.75	\$433.54	\$11,590	\$536.57	\$471.14	\$12,260	\$567.59	\$498.37
12×40	\$11,845	\$548.38	\$481.50	\$12,875	\$596.06	\$523.37	\$13,620	\$630.56	\$553.66
14×24	\$8,945	\$414.12	\$363.62	\$9,725	\$450.23	\$395.33	\$10,285	\$476.16	\$418.09
14×28	\$10,220	\$473.15	\$415.45	\$11,110	\$514.35	\$451.63	\$11,745	\$543.75	\$477.44
14×32	\$11,495	\$532.18	\$467.28	\$12,495	\$578.47	\$507.93	\$13,215	\$611.81	\$537.20
14×36	\$12,935	\$598.84	\$525.81	\$14,060	\$650.93	\$571.54	\$14,870	\$688.43	\$604.47
14×40	\$14,370	\$665.28	\$584.15	\$15,620	\$723.15	\$634.96	\$16,515	\$764.58	\$671.34
16×32	\$13,975	\$646.99	\$568.09	\$15,190	\$703.24	\$617.48	\$16,065	\$743.75	\$653.05
16×36	\$15,725	\$728.01	\$639.23	\$17,090	\$791.20	\$694.72	\$18,075	\$836.81	\$734.76
16×40	\$17,575	\$813.66	\$714.43	\$19,100	\$884.26	\$776.42	\$20,200	\$935.19	\$821.14



8x12 White Paint, Black Trim, Black Metal Roof

A perfect place to store outside supplies, the **Barn** looks attractive beside your swimming pool, by the garden, or next to the driveway. Help your children organize their bikes, riding toys, and outside games by giving them a place to keep them.

The **Barn** has 4' walls, but the design of the roof still allows for plenty of headroom. The wide double doors permit you to go in and out of your shed with ease, even if you are sitting on a garden tractor or have your arms loaded with rakes and shovels.

All 8' wide buildings come with a 4' door. All 10' and wider buildings have standard 6' double doors.

10x12 Treated Barn



8x12 Light Gray Paint, White Trim, Charcoal Metal Roof

BARN PRICES:

Treated, Painted, Urethane				Metal Barns			Vinyl Barns		
Size	Pricing	Rent to Own (36 mos.) (48 mos.)		Pricing	Rent to Own (36 mos.) (48 mos.)		Pricing	Rent to Own (36 mos.) (48 mos.)	
8×8	\$2,535	\$117.36	\$103.05	\$2,756	\$127.57	\$112.01	\$2,915	\$134.95	\$118.50
8×12	\$3,175	\$146.99	\$129.07	\$3,450	\$159.72	\$140.24	\$3,645	\$168.75	\$148.17
10×12	\$4,065	\$188.19	\$165.24	\$4,417	\$204.48	\$179.54	\$4,670	\$216.20	\$189.84
10×16	\$4,725	\$218.75	\$192.07	\$5,133	\$237.65	\$208.67	\$5,430	\$251.39	\$220.73
10×20	\$5,520	\$255.56	\$224.39	\$5,994	\$277.52	\$243.68	\$6,340	\$293.52	\$257.72
12×16	\$5,450	\$252.31	\$221.54	\$5,922	\$274.18	\$240.74	\$6,270	\$290.28	\$254.88
12×20	\$6,515	\$301.62	\$264.84	\$7,078	\$327.67	\$287.71	\$7,485	\$346.53	\$304.27
12×24	\$7,765	\$359.49	\$315.65	\$8,433	\$390.43	\$342.82	\$8,925	\$413.19	\$362.80
12×28	\$8,395	\$388.66	\$341.26	\$9,122	\$422.33	\$370.82	\$9,650	\$446.76	\$392.28
12×32	\$9,025	\$417.82	\$366.87	\$9,806	\$453.96	\$398.60	\$10,375	\$480.32	\$421.75

Playhouses



Nothing turns your backyard into a child friendly space like a **Playhouse**. Give your child the gift of a place to call their own, and unleash their creativity and imagination. It's a great way for them to enjoy the outdoors.

Having their own space can help your children develop social and emotional skills, as they interact and work together to personalize their **Playhouse**.

Our **Playhouses** include windows and doors, as well as a porch. They are sturdy and durable, and can easily last until the time your grandchildren want to experience the same playhouse their parents enjoyed when they were young.

Playhouses are ideal for backyards or gardens, and will provide hours of fun for your children.

Also included is a 36" single wood door for adult entry.



PLAYHOUSE PRICES

Size	Price	Rent to Own (36 mos.)
8x12	\$4,360	\$201.85

When it comes to outdoor entertaining and enjoying your property, there is nothing quite like a **Gazebo**. They can be a practical way to expand your outdoor living space.

Gazebos are excellent for providing coverage for dining areas, hot tubs, and even outdoor grills. The perfect place to spend time with friends, or relax with your family in the evenings while enjoying the outdoors.

Finish your backyard with a **Gazebo** and you'll have a great place to enjoy the outdoors in any season.

Prices Include:

Octagon Gazebo: 3 sections of seating on one end, no swing.

Oblong Gazebo: 10x12 or larger comes with 5' swing on one end and 3 sections of seating on opposite end

Options

Extra seating: \$40 per section

No Seating Deduct: \$40 per section

Built in Screens: Screen in floor and screen door add 20%

4' Swing: \$275

5' Swing: \$300

Roof Options:

Single or Double Roof

Cedar Shake Shingles - add 5%

Dimensional Asphalt Shingles - add 5%



Double Metal Roof



Double Metal Roof

GAZEBO PRICES:

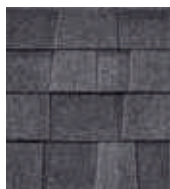
Painted and Stained Single Roof		
Size	Pricing	Rent to Own (36 mos.)
8×8	\$3,975	\$184.03
10×10	\$4,625	\$214.12
12×12	\$6,370	\$294.91

GAZEBO PRICES:

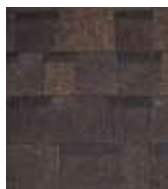
Painted and Stained Double Roof								
Size	Pricing	Rent to Own (36 mos.)	Size	Pricing	Rent to Own (36 mos.)	Size	Pricing	Rent to Own (36 mos.)
8×8	\$4,195	\$194.21	10×16	\$7,520	\$348.15	12×20	\$9,475	\$438.66
8×12	\$5,750	\$266.20	12×12	\$6,595	\$305.32	12×24	\$11,035	\$510.88
10×10	\$5,160	\$238.89	12×16	\$8,250	\$381.94	12×30	\$13,660	\$632.41
10×12	\$6,365	\$294.68	12×18	\$8,840	\$409.26			

Colors

SHINGLE COLORS



Black



Dark Brown



Weathered Wood

URETHANE COLORS



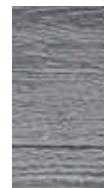
Chestnut



Red
Mahogany



Honey Gold



Driftwood

All shingles are dimensional architectural shingles.

METAL COLORS



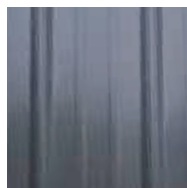
White



Stone



Red



Charcoal



Black



Green



Burnished Slate

All metal roofs are 29 gauge metal panels.

PAINT COLORS



White



Tan



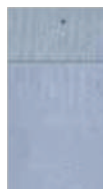
Almond



Taupe



Brown



Light Gray



Olive
Green



Dark Gray



Black



Green



Barn Red



Clay

LP Smartside® Panels for Painted and Urethane buildings. All seams and nail heads are caulked on painted buildings, but not on urethane buildings.

Note: Colors may vary due to printing process. Ask dealer for color samples.



OPTIONS

Description	Price	Description	Price
2' x 3' Window	\$75	4' Heavy Duty Ramp	\$225
3' x 3' Window	\$90	6' Heavy Duty Ramp	\$275
2' x 3' Insulated Window	\$125	8' Heavy Duty Ramp	\$325
3' x 3' Insulated Window	\$140	6' x 7' Roll-up Garage Door	\$450
14" x 21" Gable Window	\$55	8' x 7' Roll-up Garage Door	\$500
24" x 27" Gable Window	\$75	9' x 7' Roll-up Garage Door	\$550
10" x 24" Transom Window	\$55	10' x 7' Roll-up Garage Door	\$600
Window Shutters (per window)	\$50	Opening Loft Door	\$50
4' Single Wooden Barn Door	\$100	2' Shelving (per linear ft)	\$6.00
6' Double Wooden Barn Door	\$200	4' Shelving (per linear ft)	\$8.00
Solid Fiberglass Entry Door	\$300	30" Workbench (per linear ft)	\$7.00
9-Lite Fiberglass Entry Door	\$325	Double Bubble (per sq ft)	\$0.50
Heavy Duty Floor (12" on center)	\$200	Urethane Spray Foam Insulation	Ask Dealer

FLOORING

Our floors are constructed using pressure treated 4x6 notched runners and 2x6 pressure treated floor joists which are fastened into the notched runners. For added strength and durability, joists are positioned every 16" on all buildings except **Garages**, which are placed every 12". (We use 2x4 floor joists on 8' wide buildings). For the floor decking we use LP $\frac{3}{4}$ " tongue and groove flooring. **LP**

Building Width:

8' wide: Floor 8' - Eave 9'
 10' wide: Floor 10' - Eave 11'
 12' wide: Floor 11' 2" - Eave 12'
 14' wide: Floor 13' 5" - Eave 14'
 16' wide: Floor 15' 5" - Eave 16'

Rent-to-Own offers superior flexibility over traditional financing and requires no credit check. It allows the customer to acquire a building through monthly rental payments that may be canceled or paid off early at any point during the contract.



Delivery

**FREE DELIVERY AND
SET UP WITHIN 40
MILE RADIUS OF
YOUR DEALER**

Delivery

SITE PREPARATION

Our portable buildings can be setup right in your backyard. However, for the larger buildings and potentially wet yards, we recommend to put down a gravel base 4" to 6" thick of crushed rock. This gives you the best drainage and also prevents your building from settling and sinking into the dirt.

Purchasing 2" or 4" solid concrete blocks from a local Home Improvement Store is another inexpensive option many customers use. We recommend a block every 8' on each runner. Have the blocks close to the spot where your site is and our delivery driver will place them under the building for you. Our delivery drivers will provide treated wooden blocking to finish leveling and shimming if concrete blocks are not provided.



DELIVERY

Our delivery process is very simple if you have enough access for your building to be delivered to your site. Openings in fences and around obstacles need to be wide enough for your building to enter thru, with enough clearance to make necessary turns. Delivery driver is not responsible for removal of fences, gates, trees or limbs. Homestead Barns is not responsible for any damage done to your yard or your neighbors yard if you, the customer, give us permission to deliver the portable building across their yard. It is the purchaser's responsibility to obtain any needed permits, property line information, HOA permission, etc. If Homestead Barns or any of their personnel will need to come back and move the structure, there will be a charge.



Thank you for choosing Homestead Barns llc.

ALL NEW BUILDINGS HAVE A 1 YEAR WORKMANSHIP WARRANTY.